

"The tissue is the issue but the bone sets the tone."

– Dr. D. Garber

THE STRAUMANN® BONE LEVEL IMPLANT

gives you full treatment confidence, designed to preserve crestal bone through the unique Bone Control Design™, provides excellent esthetic outcomes through Consistent Emergence Profiles™, and simplifies handling with the CrossFit™ Connection.

The Straumann® Bone Level Implant offers you the following benefits:

- **High confidence and treatment predictability thanks to SLActive™ – the surface with success built in.™**
- **Minimal tissue trauma from start to finish, providing superb esthetic results**
- **Same procedures and instruments for all Straumann dental implants**



Bone Control Design™

Designed to optimize crestal bone preservation by adherence to biological principles

Consistent Emergence Profiles™

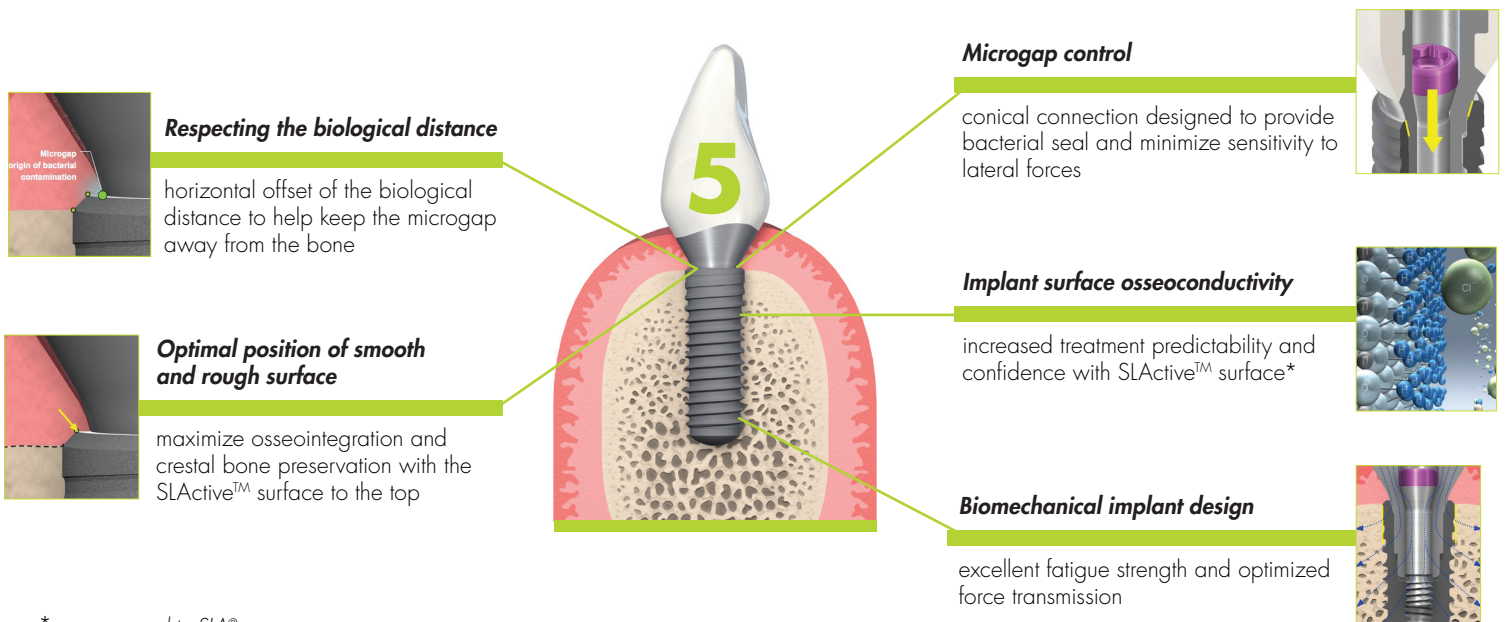
Experience simplified soft tissue management from start to finish

CrossFit™ Connection

Feel the fit of the self-guiding connection

SUPERB CRESTAL BONE PRESERVATION THROUGH BONE CONTROL DESIGN™

Straumann developed Bone Control Design™ based on five fundamental biological principles to maximize crestal bone preservation and soft tissue stability.



* as compared to SLA®

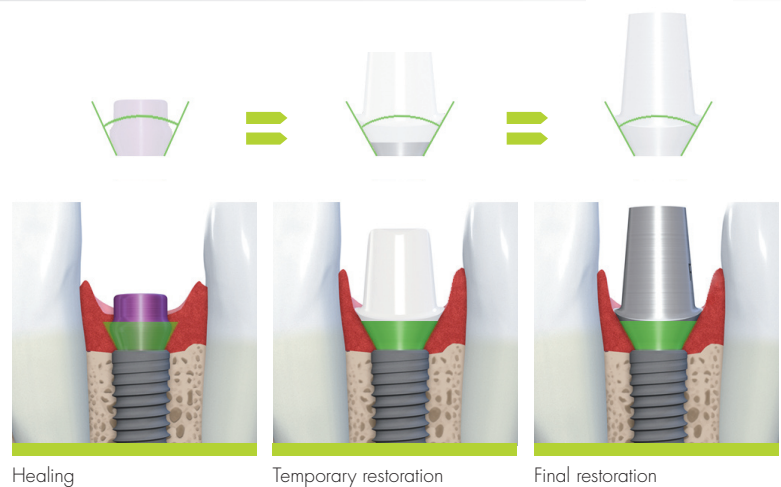
"The Straumann® Bone Level Implant provides treatment flexibility for patients with thin, scalloped, biotype soft tissue."

– Dr. Barry P. Levin, Elkins Park, PA

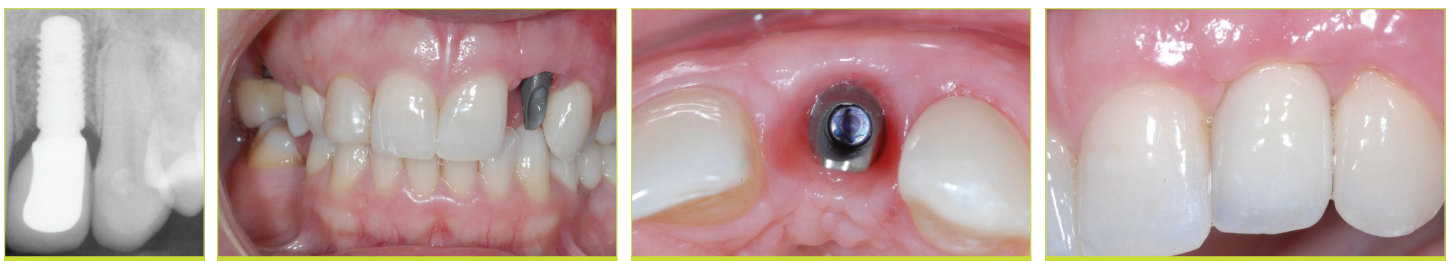
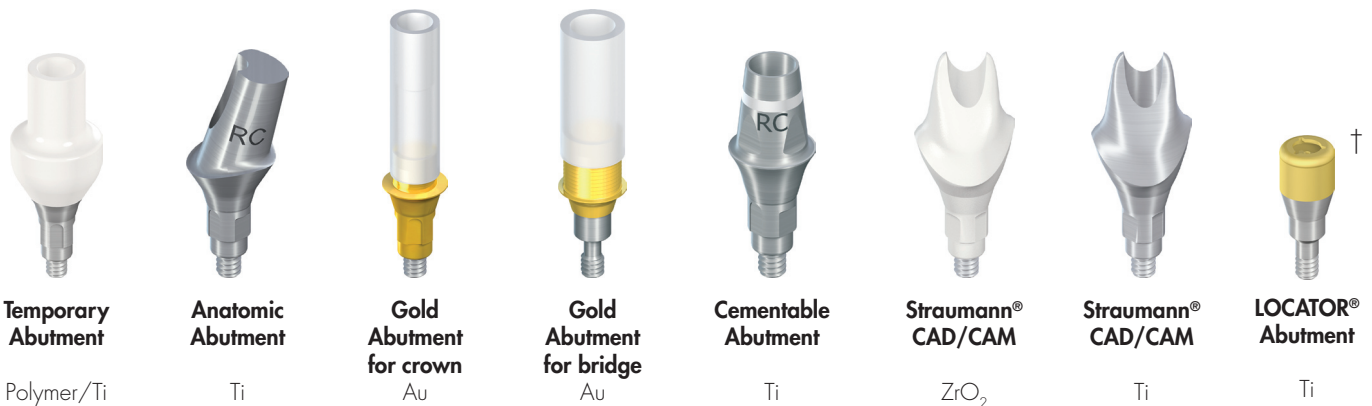
EXCELLENT ESTHETIC OUTCOMES THROUGH CONSISTENT EMERGENCE PROFILES™

The consistent emergence profiles of Straumann's prosthetic components are designed to facilitate highly esthetic restorations that mimic natural teeth. These components, designed to match the abutment profiles, allow you to easily attain esthetic results through soft tissue management, allowing for:

- Minimal tissue trauma from start to finish
- Simplified soft-tissue management
- Enhanced patient comfort through minimized soft tissue impingement



Prosthetic Options for Straumann® Bone Level Implant



Courtesy of Dr. Barry P. Levin, Elkins Park, PA (surgical), Dr. Brian L. Wilk (restorative)

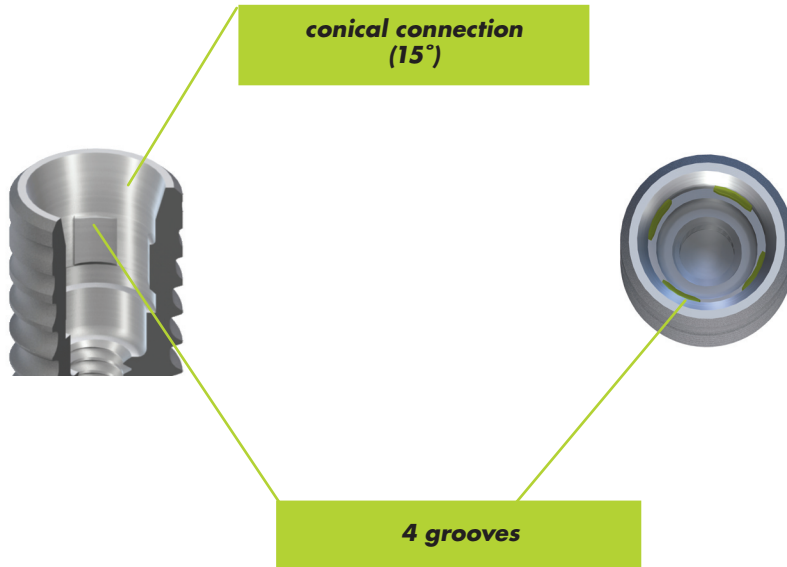
† pending FDA clearance

"The implant procedure is technically no different than what I have been doing except for the new profile drill prep."

– Dr. William F. Runyan, Fort Worth, TX

SIMPLIFIED HANDLING

THROUGH CROSSFIT™ CONNECTION



Feel the fit of the self-guiding connection

The prosthetic connection is intuitive, self-guiding and easy to grasp. The CrossFit™ connection:

- Gives prosthetic flexibility and stability through its deep conical connection
- Provides a clear-cut insertion through the guidance of 4 grooves
- Designed to prevent rotation

SAME

SURGICAL KIT,
PROSTHETIC KIT,
PROCEDURE,
and INSTRUMENTS

FOR ALL STRAUMANN® DENTAL IMPLANTS

"The results show that the SLActive™ surface is conducive to faster bone healing.*"

– Dr. David L. Cochran, San Antonio, TX

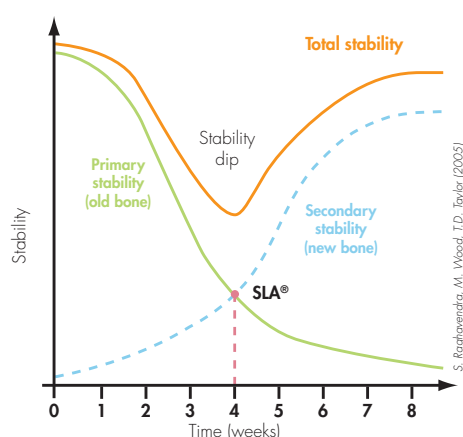
OUTSTANDING SUCCESS RATES

SLActive™ – THE SURFACE WITH SUCCESS BUILT IN.™

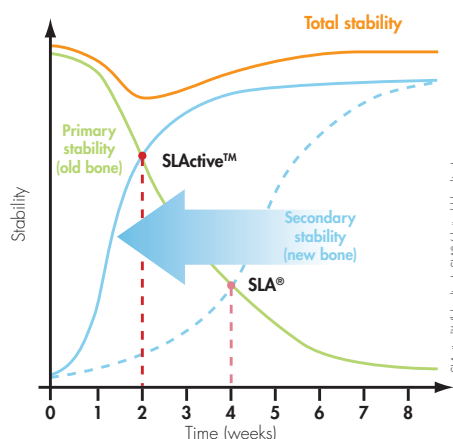
Straumann's SLActive™ surface sets a new standard in implant dentistry. As the first chemically active implant surface, SLActive™ offers you:

- Faster osseointegration to enhance confidence*
- Increased treatment predictability*
- Reduced healing times, from 6–8 weeks to 3–4 weeks*

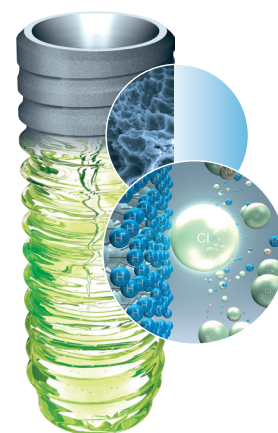
Secondary Stability Sooner*



The speed of osseointegration dictates the severity and duration of the stability dip.



SLActive™ provides more predictability by achieving secondary stability sooner than SLA®.



Straumann® Bone Level Implant – Study Overview

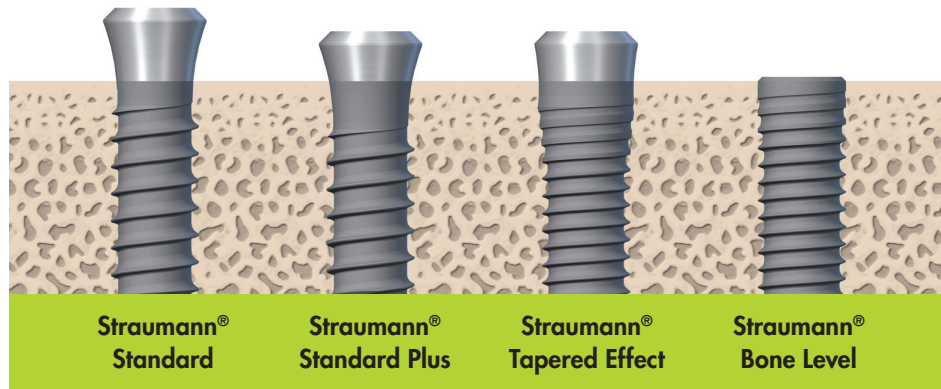
To date, several studies have been initiated to substantiate the performance of the Straumann® Bone Level Implant.

Topic	Content	Study Setup, Principal Investigator
property tests	Biomechanical stability	Ideal strength and fatigue strength of the Straumann® Bone Level Implant in comparison to competitors
	Reliability	Measurement of tight screw fit after cyclic mechanical load of the Straumann® Bone Level Implant
	Microgap	Measurements of gap size and tightness under static and dynamic load
pre-clinical studies	Bone maintenance	Bone maintenance with submerged and non-submerged implants placed at different heights
		Interproximal bone maintenance with adjacently placed implants
clinical studies	Basic clinical evidence⁺	Performance and esthetic outcome in single tooth gaps in the anterior maxilla
	Esthetics⁺	Submerged vs. non-submerged placement in the anterior maxilla and mandible
	A variety of indications⁺	Implant success and survival rate in daily dental practice

⁺ Clinical studies are ongoing.

* as compared to SLA®

CONFIDENCE AT ANY LEVEL



THE STRAUMANN® DENTAL IMPLANT SYSTEM – **YOUR CHOICE**

www.straumann.com



STRAUMANN GUARANTEE

International Headquarters

Institut Straumann AG
Peter Merian-Weg 12
CH-4002 Basel, Switzerland
Phone +41 (0)61 965 11 11
Fax +41 (0)61 965 11 01

North American Distributors

Straumann USA, LLC
60 Minuteman Road
Andover, MA 01810
Phone 800/448 8168
978/747 2500
Fax 978/747 2490
www.straumannusa.com

Straumann Canada Limited
4145 North Service Road, Suite 303
Burlington, ON L7L 6A3
Phone 800/363 4024
905/319 2900
Fax 905/319 2911
www.straumann.ca



INTRODUCING **CONFIDENCE AT BONE LEVEL**



Featuring
the unique
SLActive™ surface!



COMMITTED TO
SIMPLY DOING MORE
FOR DENTAL PROFESSIONALS