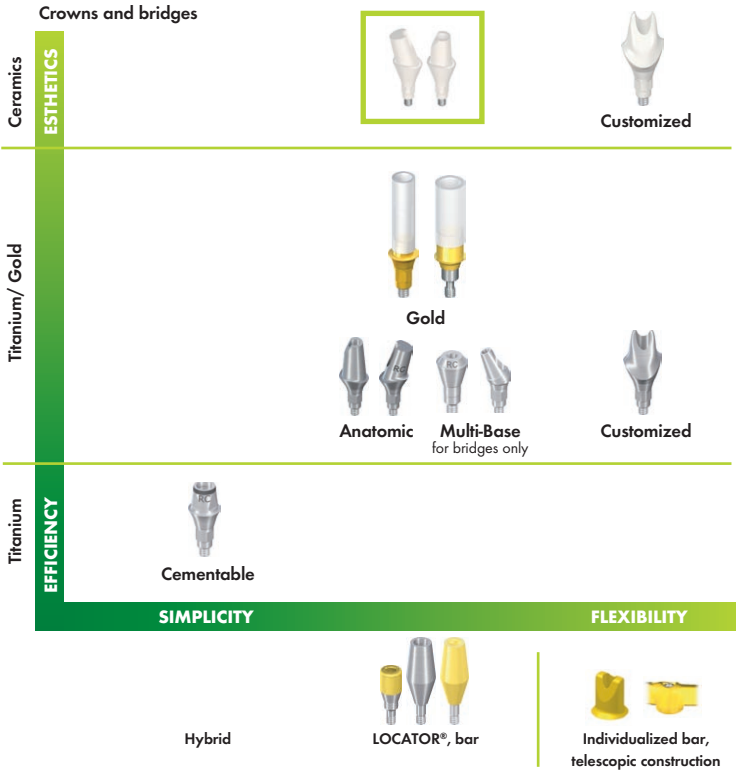


Characteristics	Advantages
2 color shades	Better esthetics through flexible adaption to patient teeth color and anatomy.
2 gingiva heights	
Straight and angled form	Flexible adaption to patient dental anatomy and implant placement.
CrossFit® Connection	The self-guiding connection makes handling easier, designed to ensure precision and offers long-term stability as well as restorative flexibility.
Consistent Emergence Profiles®	■ Optimizes and simplifies the soft tissue management process throughout the treatment ■ Eases the fabrication of temporary restorations
Integrated into the Straumann® Dental Implant System	Provides a clinical and economic choice for dentists and dental technicians
CrossFit® PLAN Set	Use of the Straumann® CrossFit® PLAN Set ■ No new investments necessary ■ Application of the same prosthetic procedures, no change required
Direct veneering option	The Straumann® Anatomic IPS e.max® Abutment allows the dental technician to directly veneer the restoration (e.g., IPS e.max Ceram) or use the press-on technique (e.g., IPS e.max ZirPress), which reduces the time needed to build the final restoration.
IPS e.max® (ZrO <sub>2</sub> ) material	High quality zirconium dioxide ceramic from Ivoclar Vivadent with outstanding esthetic and material properties. A convenient introduction to anatomically formed ceramic abutments, which might be a basis for possible future use of advanced CAD/CAM technologies such as the Straumann CAD/CAM System.

The Straumann Anatomic IPS e.max Abutment enables dentists to provide their patients a highly-esthetic restoration from a stock component. The exposure to ceramics serves as an excellent stepping stone into the world of all ceramic dental restorations.

To learn more please contact Straumann Customer Service at 800/448 8168 or your local Straumann Territory Manager today.

The Straumann® Anatomic IPS e.max® Abutment complements the Straumann® Dental Implant System in the field of bone level applications.



www.straumann.com

	<b>International Headquarters</b> Institut Straumann AG Peter Merian-Weg 12 CH-4002 Basel, Switzerland Phone +41 (0)61 965 11 11 Fax +41 (0)61 965 11 01	<b>Straumann USA</b> Straumann USA, LLC 60 Minuteman Road Andover, MA 01810 Phone 800/448 8168 978/747 2500 Fax 978/747 2490 www.straumannusa.com	<b>Straumann Canada</b> Straumann Canada Limited 3115 Harvester Road, 1st Floor Burlington, ON L7N 3N8 Phone 800/363 4024 905/319 2900 Fax 905/319 2911 www.straumann.ca

Straumann products are CE marked 1/10  
© Straumann USA, LLC 2010. Straumann® is a registered trademark of Straumann Holding AG or its affiliates. All rights reserved.  
IPS e.max®, IPS e.max® ZirPress, and IPS e.max® Ceram are registered trademarks of Ivoclar Vivadent, Lichtenstein.



# ESTHETICS - BY DESIGN

## THE STRAUMANN® ANATOMIC IPS E.MAX® ABUTMENT



COMMITTED TO  
**SIMPLY DOING MORE**  
FOR DENTAL PROFESSIONALS<sup>SM</sup>

# The Straumann® Anatomic IPS e.max® Abutment<sup>1</sup> – a new flexible and esthetic restorative product resulting from technology synergy between Straumann and Ivoclar Vivadent

The new Straumann Anatomic IPS e.max® Abutment by Straumann® and Ivoclar Vivadent gives clinicians the high-end esthetics of a custom restoration in combination with the flexibility and predictability of a stock abutment. This premium, stock-ceramic solution serves as an excellent basis for those clinicians looking to transition into the all-ceramic world of dental restorations.

Straumann and Ivoclar Vivadent are dental pioneers in the fields of implant and restorative dentistry, utilizing advanced technologies to deliver premium solutions for dentists and their patients.

DESIGN AND PRECISION  
MADE BY STRAUMANN AND  
IVOCLAR VIVADENT

The Straumann Anatomic IPS e.max® Abutment by Straumann® and Ivoclar Vivadent is a premium stock zirconium dioxide abutment designed for high-end esthetics, treatment flexibility and predictability. The patented CrossFit® Connection and Consistent Emergence Profiles® of the abutment help tissue maintenance throughout the restorative treatment phase, making this abutment flexible and predictable for dental professionals and their patients.

## A strategic cooperation based on complementary strengths in restorative dentistry

**Straumann** offers a full portfolio of product solutions, from tissue level and bone level implants and implant restorations; to tissue regeneration; and CAD/CAM copings, frameworks and abutments. With an eye towards digital dentistry, we continue to invest in research, development, and new

technologies that will allow dental professionals to become more efficient and more precise in their daily work.

**Ivoclar Vivadent** is a global leader in the development and production of ceramic materials. A comprehensive product portfolio extends through the technician's bench in the dental laboratory to the tray of the general dentist; Ivoclar Vivadent's strength lies in their innovative range of premium ceramics for beautiful, natural restorations.

Both companies abide by a stringent, quality control process and use only trusted materials to manufacture products. By combining our areas of expertise and adhering to the same high standards, we can deliver a premium stock product that is designed to deliver high-quality functional and esthetic solutions for patients.

<sup>1</sup> Currently available for RC connection only, material of the Straumann® Anatomic IPS e.max® Abutment is ZrO<sub>2</sub>.



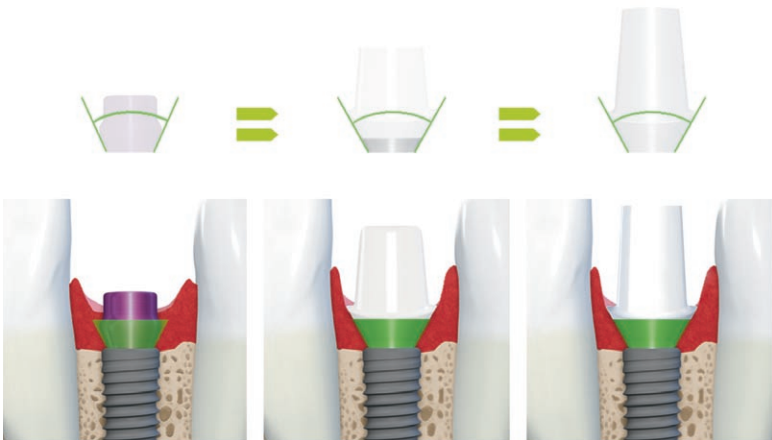
# High esthetic restorations with a high degree of flexibility



The Straumann® CrossFit™ PLAN Set can be used to plan restorations with the Straumann® Anatomic IPS e.max® Abutment.



The prepared mucosa margin of the Straumann® Anatomic IPS e.max® Abutment is designed to support easy and fast restorative procedures.



Consistent Emergence Profile from healing abutment to the final abutment result engineered to simplify and optimize soft tissue management.

## Flexibility

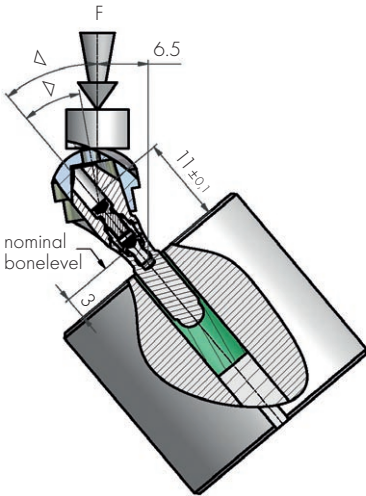
A multitude of restorative treatment options are available. The IPS e.max zirconium dioxide ceramic is ideal for the fabrication of durable, high-precision and highly esthetic abutments. Strong mechanical properties allow clinicians to use this abutment with confidence. To test the mechanical properties of the Straumann Anatomic IPS e.max Abutment, fatigue strength testing according to the ISO 14801 standard was conducted.

through a minimal microgap between the implant and abutment that is under 1 µm. The CrossFit connection features an intuitive implant-abutment connection that is self-guiding and designed to enable simple positioning. The connection is designed to allow clear-cut insertion with all components to provide outstanding protection against rotation, as well as long-term stability.

## Predictability

The design of the new abutment mimics the existing Straumann Anatomic Abutment platform. Clinicians can use the same instruments – including the CrossFit PLAN set – and procedures they are already accustomed to. The preshaped abutment design incorporates the Consistent Emergence Profiles concept, which is designed to aid in post-surgical healing of the surrounding soft tissue once the abutment is placed.

The CrossFit Connection is designed to prevent bacterial infiltration through its shape and



The Straumann® Anatomic IPS e.max® Abutment passed ISO-defined fatigue strength tests with over 2 million cycles.

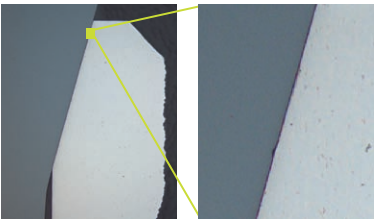
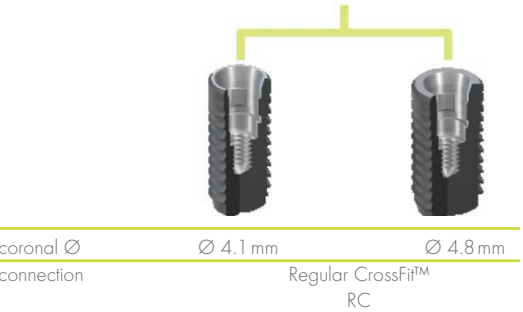
The Straumann Anatomic IPS e.max Abutment is made of zirconium dioxide (ZrO<sub>2</sub>) and is indicated for screw-retained, single-tooth restorations as well as for cement-retained, single-tooth and bridge restorations (via mesostructure). Two shades (MO 0, MO 1), straight and angled shapes, and two gingival heights offer high treatment flexibility for the patient's specific clinical situation.

A variety of layering materials can be directly veneered or pressed to the abutment, saving the technician time when building the restoration. Restorative materials like the IPS e.max system serve as an excellent base for zirconia crowns when creating an all ceramic-restoration.

## High-End Esthetics

Dentists are turning to ceramics for highly esthetic solutions. The Straumann Anatomic IPS e.max Abutment eliminates metal margins and gives the patient a natural looking smile, making this an excellent abutment option for anterior restorations.

Color	straight	15° angled
MO 0 (white)		
Article Number	022.4812	022.4814
MO 1 (shaded)		
Article Number	022.4832	022.4834
	GH 2 mm	GH 3.5 mm



The Straumann CrossFit™ Connection is designed so that the micro-gap between implant and abutment has a dimension of below 1 µm\*.

\*0.6 ± 0.3 µm (n=36)